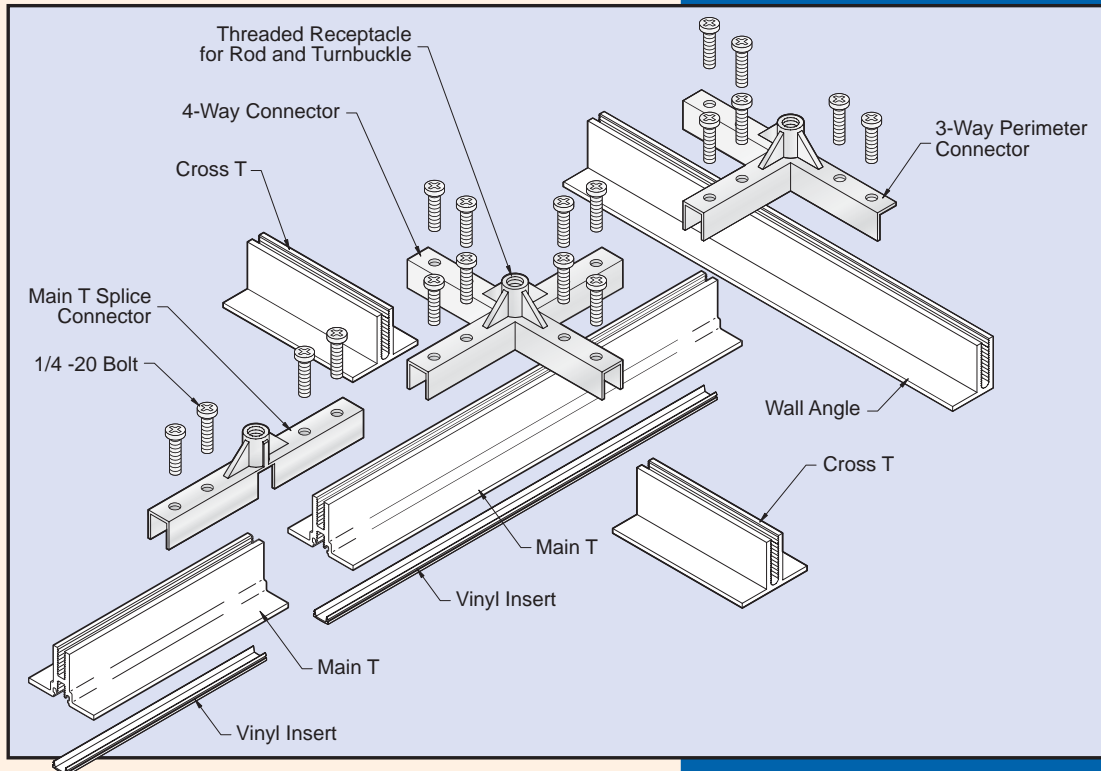
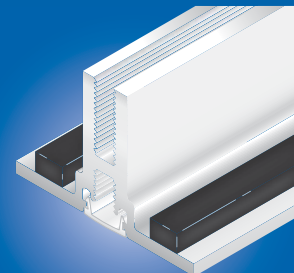


Easy to Install Dead Level Superior Load Bearing Capability Designed to Meet Exacting Standards for Cleanrooms



Slotted T-Bar is ideal for hanging lights, piping, equipment and electrical components at ceiling level without obstructing the operation of a cleanroom. Connector and suspension hardware is interchangeable with Gasket and Gel Seal Style T-Bar hardware.

Slotted T-Bar is extruded from 6063 aluminum featuring a clear anodized satin finish, maximum corrosion resistance, structural integrity and a state-of-the-art ceiling from inside.



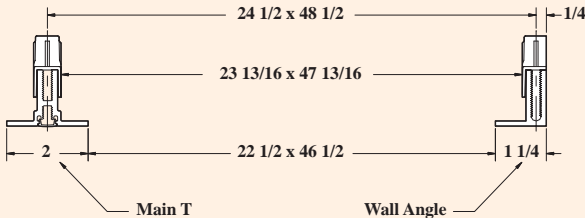
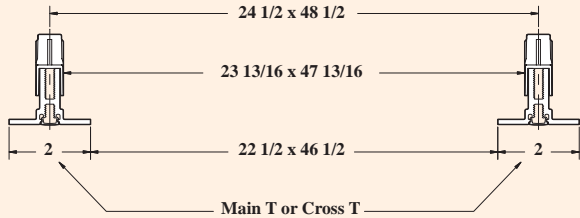
**2" Gasket Seal
(Slotted)**

- Anodized Aluminum Is Standard
- White Powder Coat Finish Available

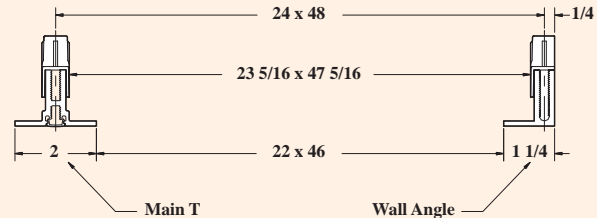
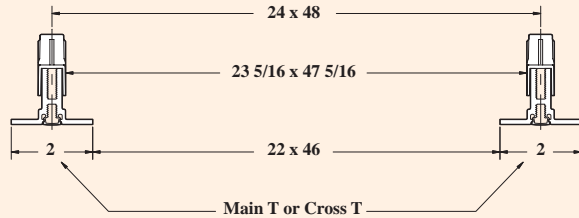
Gasket Style Slotted T-Grid Parts for 2" T-bar								
Part No.	Description	Nominal	Actual	Web Depth	Flange Width	Weight Per LF	Pieces Per Carton	Linear Feet Per Carton
147498	Main T	12'	144"	1 3/8"	2"	0.85 lb.	12	144
148011 148012	Cross T	4'	46" 46.5"	1 3/8"	2"	0.85 lb.	36	144
148009 148010	Cross T	2'	22" 22.5"	1 3/8"	2"	0.85 lb.	36	72
148016	Wall Angle	12'	144"	1 3/8"	1 1/4"	0.65 lb.	12	144
966027	Gray Vinyl Insert							
966028	White Vinyl Insert							

Gasket Style Slotted T-Bar Opening

Standard 24 1/2" x 48 1/2" o.c.



Undersize 24" x 48" o.c.



Load Specifications for Gasket Style Slotted T-Grid System

Deflection Formula	L/360	L/180	L/360
Hanger Spacing (Span)	48"	48"	24"
Main Tee Spacing	48"	48"	48"
Maximum Point Load (LBS.)	116	168	336
Maximum Uniform Load (LBS./LF)	26.5	42	168
Applied Load (LBS./SF)	6.6	10.5	42
Deflection at mid-span	1/8"	1/4"	1/16"