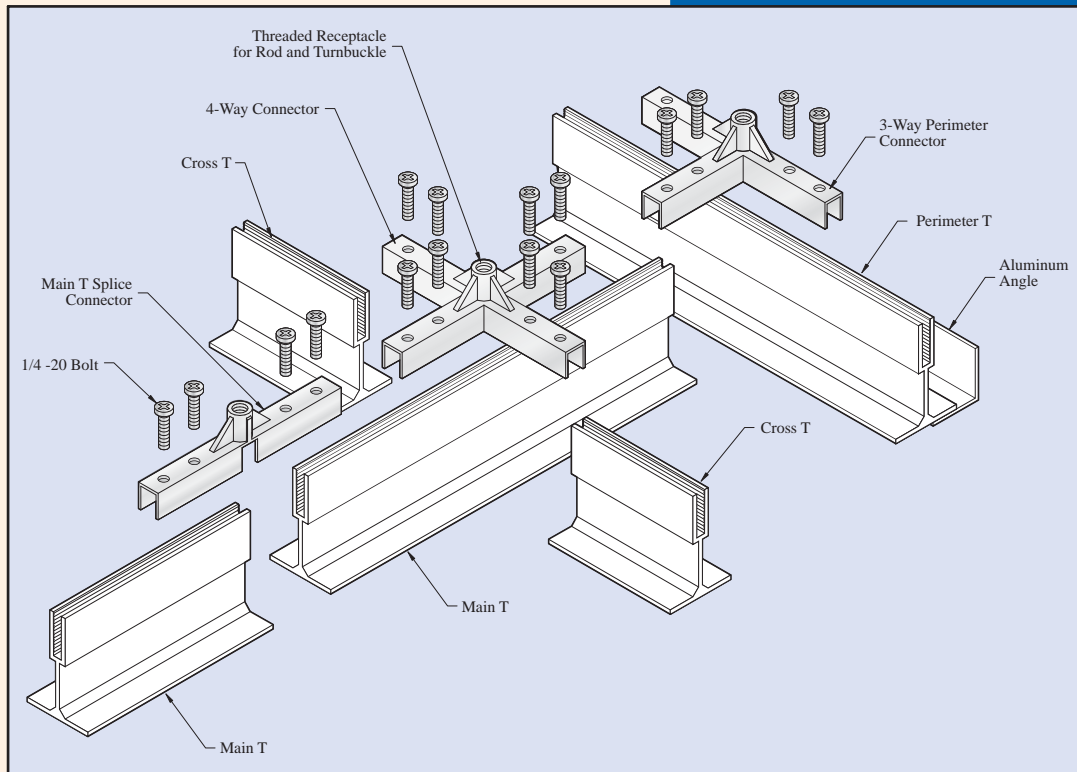


## Easy to Install Superior Load Bearing Capability For Cleanrooms Requiring A Walkable Grid System



Walkable T-Grid is suspended using 3/8"-16 threaded rod at specified hanging points. Suspension hardware provides easy adjustment using full body turnbuckles. Ceiling can be installed level within .10". Zinc alloy connectors at each grid intersection insures exact alignment and grid spacing.

Walkable T-Bar extruded from 6063-TS aluminum featuring a clear anodized satin finish, maximum corrosion resistance, structural integrity and a state-of-the-art ceiling. Powdercoat paint finish also available.

Closed cell gasket provides a seal between grid and ceiling. Field applied or factory applied gasket is available.



**2" Walkable T-Grid**

- Anodized Aluminum or
- White Powder Coat Finish Available

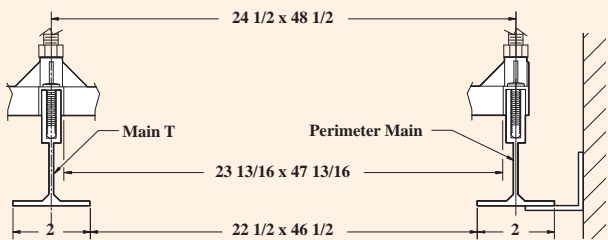
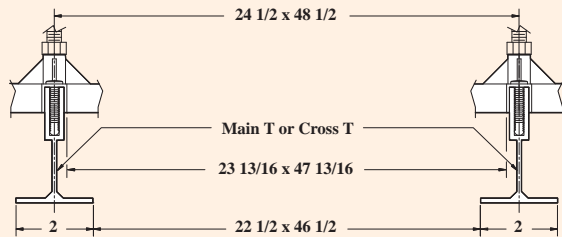
# 2" Walkable T-Grid Data Sheet

## Walkable T-Grid Parts for 2" T-bar

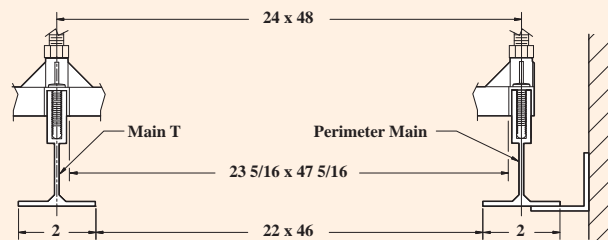
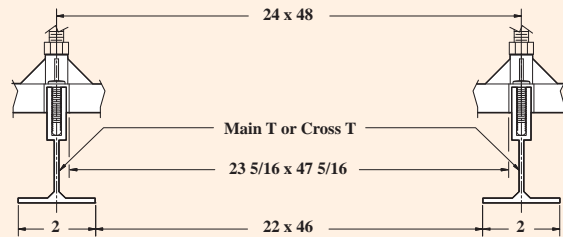
Part No. (Anodized Aluminum)	Part No. (White Powder Coat)	Description	Actual	Web Depth	Flange Width	Weight Per LF	Pieces Per Carton	Linear Feet Per Carton
148089	148094	Main T	144"	3"	2"	1.06 lb.	12	144
148087 148088	148092 148093	Cross T	46" 46.5"	3"	2"	1.06 lb.	36	144
148085 148086	148090 148091	Cross T	22" 22.5"	3"	2"	1.06 lb.	36	72

## Walkable T-Bar Opening Sizes

### Standard 24 1/2" x 48 1/2" Centerline Spacing



### Undersize 24" x 48" Centerline Spacing



## Load Specifications for Walkable T-Grid System

Deflection Formula	L/360	L/360	L/360
Hanger Spacing (Span)	48"	48"	24"
Main Tee Spacing	24"	48"	48"
Maximum Point Load (LBS.)	620	620	620
Maximum Applied Load (LBS./SF)	77	38	77
Deflection at mid-span	1/8"	1/8"	1/8"