

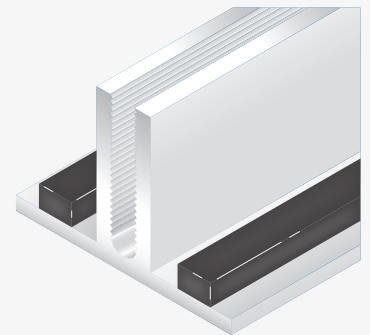
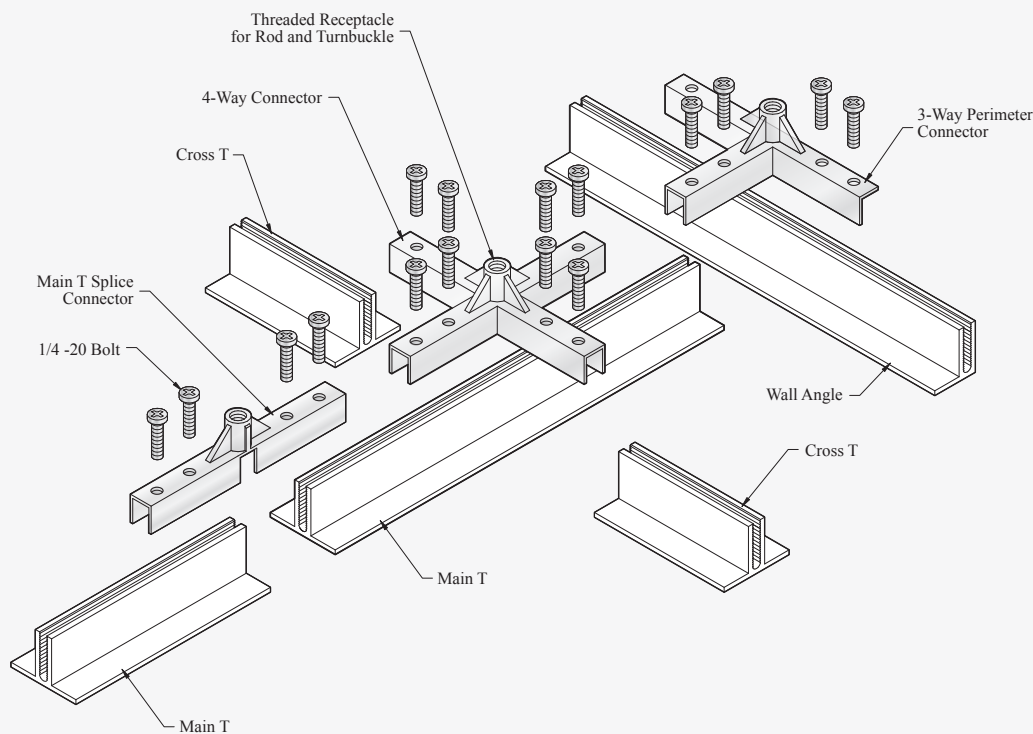
# Product Data and Specifications

**Easy to Install Dead Level**  
**Superior Load Bearing Capability**  
**Designed to Meet Exacting Standards for Cleanrooms**

Our suspension hardware provides easy adjustment requiring one-half the turnbuckles that other systems use and the ceiling can be installed

dead level. Another advantage over non-structural T-Bar is that our 2" HD T-Bar doesn't twist, resulting in less time to install.

Gasket Style T-Bar extruded from 6063 aluminum featuring a clear anodized satin finish, maximum corrosion resistance, structural integrity and a state-of-the-art ceiling from inside.



**2" Gasket Seal**

**Anodized Aluminum In Stock**  
**White Powder Coat Finish Available**

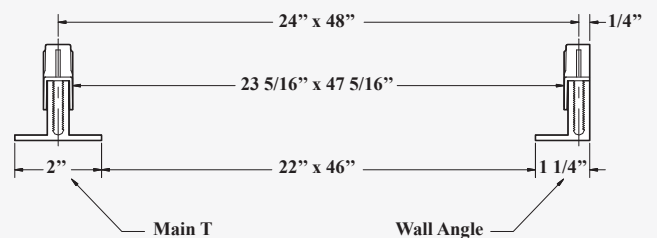
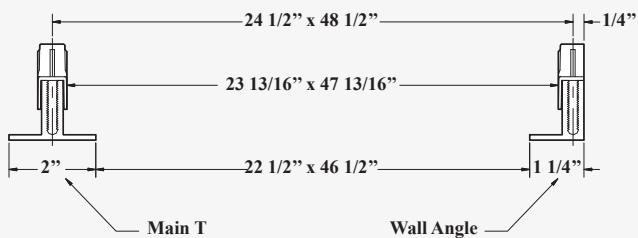
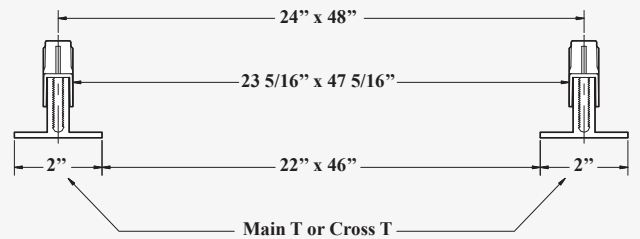
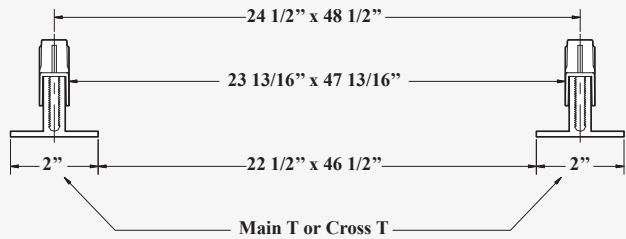
## Gasket Style Slotted T-Grid Parts for 2" T-bar

Part No.	Description	Nominal	Actual	Web Depth	Flange Width	Weight Per LF	Pieces Per Carton	Linear Feet Per Carton
148015	Main T	12'	144"	1 3/8"	2"	0.85 lb.	12	144
148011	Cross T	4'	46"	1 3/8"	2"	0.85 lb.	36	144
148012	Cross T	4'	46.5"	1 3/8"	2"	0.85 lb.	36	144
148009	Cross T	2'	22"	1 3/8"	2"	0.85 lb.	36	72
148010	Cross T	2'	22.5"	1 3/8"	2"	0.85 lb.	36	72
148016	Wall Angle	12'	144"	1 3/8"	1 1/4"	0.65 lb.	12	144

### Gasket Style T-Bar Opening Sizes

Standard 24 1/2" x 48 1/2" o.c.

Undersize 24" x 48" o.c.



## Load Specifications for Gasket Style T-Grid System

Deflection Formula	L/360	L/180	L/360
Hanger Spacing (Span)	48"	48"	24"
Main Tee Spacing	48"	48"	48"
Maximum Point Load (LBS.)	116	168	336
Maximum Uniform Load (LBS./LF)	26.5	42	168
Applied Load (LBS./SF)	6.6	10.5	42
Deflection at mid-span	1/8"	1/4"	1/16"